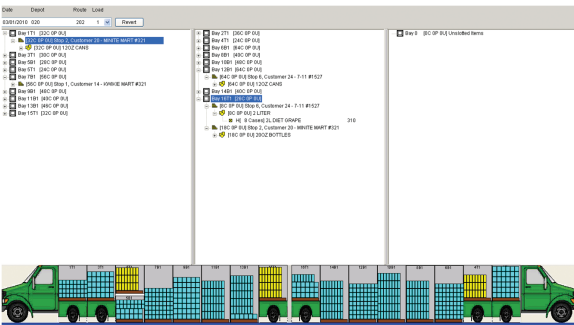


# HighJump Load Management



## Faster and More Efficient Loading at Your Docks

You are constantly challenged to reduce supply chain costs, even in the face of growing revenues. Not only do you have more customers to serve and more SKUs to manage, you need to perform this work more efficiently. The HighJump™ Load Management solution directs your workers to pick and load products onto your delivery trucks in the most optimal way. Directing their work increases both productivity and accuracy of outbound orders. The system ensures the right product gets on the right truck, in the right location on the truck.



## Improve Delivery Drivers Productivity

Delivery drivers load and unload a lot of product from their trucks on a daily basis. Making sure the product is loaded in the optimal way for easy location and unloading is critical. HighJump Load Management optimizes where the product is located on the truck to reduce lost time moving product or searching for specific orders. For drivers that also sell directly off of the truck, the solution accepts forecasts for the appropriate amount of inventory that should be carried to minimize additional movements of product, reducing labor and fuel costs.

## Enhancing Visibility for Greater Accountability

HighJump Load Management helps you keep track of work performed in the warehouse with detailed visibility into picking and loading activities by truck, route or employee. You can also track inventory movement through the pick-to-delivery process quickly by location and pallet.



HighJump Load Management Feature	What it Means for Your Business
Picking	<ul style="list-style-type: none"> <li>• Save picking time with scanning support, kiosks, handhelds and voice-based picking</li> <li>• Drive worker productivity with picking activity management</li> </ul>
Load Optimization	<ul style="list-style-type: none"> <li>• Aggregate loads by product</li> <li>• Maximize SKUs per pallet capability with user override</li> <li>• Strong multi-variable analysis</li> <li>• Automatic overload based on available heights</li> <li>• Automatic layer rounding</li> <li>• Carts per bay</li> <li>• SKUs per cart</li> </ul>
Unloading	<ul style="list-style-type: none"> <li>• Optimize space and delivery stop time with efficient loading and unloading</li> <li>• Rapid unloading with visibility of exact location on truck</li> </ul>
Inventory Accuracy	<ul style="list-style-type: none"> <li>• Load audits</li> <li>• Cycle counts of trucks</li> </ul>
Load Plan	<ul style="list-style-type: none"> <li>• Directed and sequenced loading of products</li> <li>• Ability to provide load contents via Advanced Shipment Notice (ASN) to retailers</li> </ul>
ASN Processing With Your Customers and Suppliers	<p>Reduce check-in time by up to 25%</p> <ul style="list-style-type: none"> <li>• Preferred check-in status</li> <li>• Reduce keying of load/invoice adjustments</li> <li>• More deliveries per vehicle</li> </ul>
Multiple Delivery Methods	<p>Flexible delivery methods</p> <ul style="list-style-type: none"> <li>• Bulk, Side-load</li> <li>• Hybrid</li> <li>• Cart</li> <li>• Case</li> </ul>

## HighJump Software: Your Trusted Partner for Future Growth

HighJump Software provides supply chain solutions from supplier enablement to last mile mobile solutions for over 500 direct to store distribution companies. As your business grows in scale and complexity, HighJump Software can provide integrated modules for survey management, competitive data collection, warehouse management, load optimization and business intelligence. Together, these applications enable you to leverage critical business data in ways that help you generate and take advantage of new sales opportunities.

