



HighJump Application Suite for PeopleSoft

HighJump Application Suite for PeopleSoft

HighJump™ Data Collection Advantage (DCA) is the data and communications hub connecting your data collection network, PeopleSoft and other relevant business systems. Transactional prompts guide the end user through collection of data, validating critical inputs in real-time or batch communication ensuring entry of data to your ERP system. DCA also automates the management of wireless networks and end-user devices, enabling enterprise-wide data collection with minimal administrative involvement.

DCA allows you to rapidly deploy standard PeopleSoft transactions, or to easily configure them to your specific requirements using menu-driven screens, selection boxes and pre-defined fields. Transactions are deployed automatically over your wired or wireless network, saving hundreds of hours of individual device configuration time. DCA logs every aspect of each transaction, ensuring a fail-safe hand-off of data to the certified PeopleSoft interfaces. It also enables collection and validation of data even when PeopleSoft is not available.

DCA supports a complete range of barcode entry devices from industry leading vendors including:

- Stationary terminals
- Batch and radio frequency (RF) portable terminals
- PDAs
- Network and RF barcode printers

DCA incorporates many advanced features designed to automate and streamline your supply chain, including:

- Direct input from counting scales and PLCs
- Automatic e-mail and alarm generation
- Support for timed transactions across multiple time zones
- Support for multiple languages
- Robust reporting and graphing capability via paper or the Web
- Access to externally defined and maintained database tables via ODBC
- Short and long-term scheduling of unattended imports, exports, operating system commands, report printing and other events

PeopleSoft Transaction Suite

The Advantage Platform for PeopleSoft:

- Streamlines critical, data intensive activities with the accuracy and timeliness of barcode data collection
- Robust transaction suite
- Easy for customer to change (using HighJump configuration tools)
- Integrates with PeopleSoft Inventory, Manufacturing and Purchasing modules
- Interfaces co-developed by HighJump and PeopleSoft
- Additional, non-specific PeopleSoft transactions and functionality can be stored separately or integrated back to PeopleSoft through standard and non-standard interfaces.
- Real-time Web-based reporting



The PeopleSoft Transaction Suite provides standard interfaces, prompts, inputs and validations for immediate, out-of-the-box use, but can be easily tailored using HighJump configuration tools. This allows HighJump or the customer to tailor transactions to meet your exact business needs. Below are some of the more than 70 transactional interfaces available:

Distribution

Associate Ship Container w/ Pick Batch	De-Associate Ship Container w/ Pick Batch
Associate Ship Container w/Container & Pick Batch	De-Associate Ship Container w/Container & Pick Batch
Associate Shipping Serial Numbers w/Pick Batch	De-Associate Shipping Serial Numbers W/Pick Batch
Put-away Plan Complete	Pick Batch Complete
Put-away Plan Line Complete	Pick Batch Line Complete
Put-away Location	Pick Location
Item Transfer to Storage Location	Paperless Inventory Picking
Container Transfer	Item Container to an Existing Container Transfer
Associate Item to a New Container	Container to New Container Transfer
Associate Item to an Existing Container	Container to Existing Container Transfer
De-Associate Item from a Container	De-Build Container
Item Container to a New Container Transfer	Receipt of Total ASN or Shipment
Cycle Count	Receipt of Total Purchase Order
Cycle Count Export	Receipt of Purchase Order Lines
Inventory Adjustments (8.0+)	Receipt of Purchase Order Schedules
Inter Unit Receipts (8.0+)	Balance Inquiry

Manufacturing

Production ID Completion / Scrap to Stock	Production Schedule Completion / Scrap to Stock
Production ID Completion / Scrap to Intermediate Operation	Production ID Scrap Only to Intermediate Operation
Kit Issue to Assembly for a PID	Kit Return to Stock from a PID
Pick Batch Complete	Pick Location
Pick Batch Line Complete	Paperless Production Picking
Multiple Output Completions (8.0+)	Kit Issue Substitution (8.0+)
Actual Hours Reporting (8.0+)	Flow Manufacturing Transactions (8.0+)

Asset Management

Asset Count	Count Upload/Download
Asset Move	Asset Update

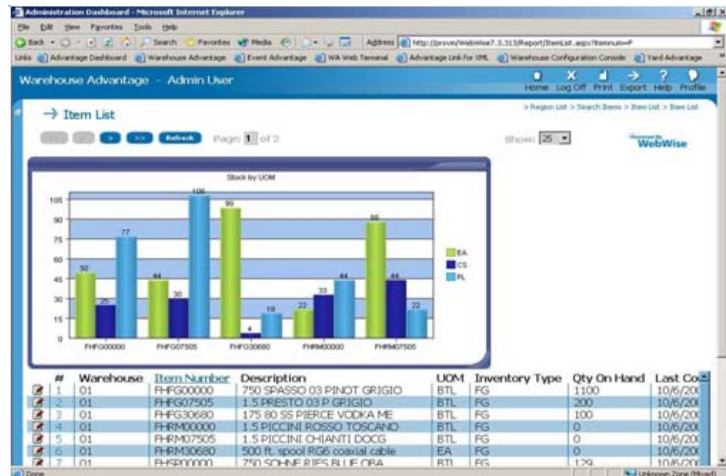
Barcode Label Printing

Storage Container Label	Shipping Carton Label
Item Storage Label	Shipping Container ID
Storage Location Label	Production Completion Label
Receiving Label	Kanban Labels (8.0+)

Management Visibility: WebWise

WebWise is a Web-based portal that provides the crucial real-time data and performance metrics essential for making strong strategic and tactical decisions.

Easy to access and navigate over the Internet or corporate Intranet, WebWise organizes and displays information about your distribution and supply chain processes in clear, easy-to-understand graphics (with drill-down detail available). All pages within WebWise can be viewed on wireless PDA devices. Following are a few of the performance indicators that WebWise puts at your fingertips:



- Real-time employee and task activities
- Real-time inventory levels
- Real-time order status
- Comparative graphics of metrics you select based on the parameters you find most useful (i.e., site, time, region, product, etc.)

Par Inventory Functionality

A simple, intuitive, graphical interface guides users through the counting process for PeopleSoft Par Inventory, enforcing critical count items, and incorporating time saving search features. Fixed order quantity, par level and min/max options are all supported, using handheld devices.

- Par Inventory - Optimal inventory level for a remote storage location
- Par Location - Remote storage location e.g. a cart in a hospital
- Par Location Definition - Definition of a particular remote storage location
- Critical Count Item - Defined in PeopleSoft for each item in each Par location
- Replenishment Options Defined in PeopleSoft

Par

Maintain quantity at optimal level
 Order quantity = optimal quantity - count quantity

Min/Max

Minimum and maximum quantities allowed for the item
 Order quantity = max quantity - count quantity

Fixed Order Quantity (FOQ)

Defines a fixed quantity to order for the item

Counting Options Defined in PeopleSoft

Count quantity
 User enters the on-hand quantity for the item
 PeopleSoft calculates the quantity to order
 Request quantity
 User enters the replenishment quantity

Data Flow

Templates maintained in PeopleSoft
 Download templates
 Conduct inventory counts
 Upload count data
 Data processed in PeopleSoft

Download Options

Download all Par cart locations
 Download specific Par cart locations
 Download a specific group
 Can be either batch/cradle or wireless

Counting Options

Critical count warning
 Can skip non-critical count items
 Directed mode - device directs the user to each item
 Search mode - search by Item ID or UPN

Upload Options

Upload all items
 Upload only the counted items



Delivery Management

HighJump Delivery Advantage is a Pocket PC-based application that provides total control and real-time, Web-based tracking of package delivery and pick-up processes. This robust application integrates seamlessly with all HighJump solutions or your existing fulfilment system to facilitate verification and tracking of pick-ups and deliveries. The application guides delivery and pick-up personnel through their route, empowering them to confirm package pick-up/drop-off and capture signatures with time/date stamps to confirm activity completion. The application runs on Pocket PC-based devices and transmits information back to your fulfilment system to complete the supply chain information loop. In addition, the system provides last-mile tracking to extend your visibility of products within the supply chain.

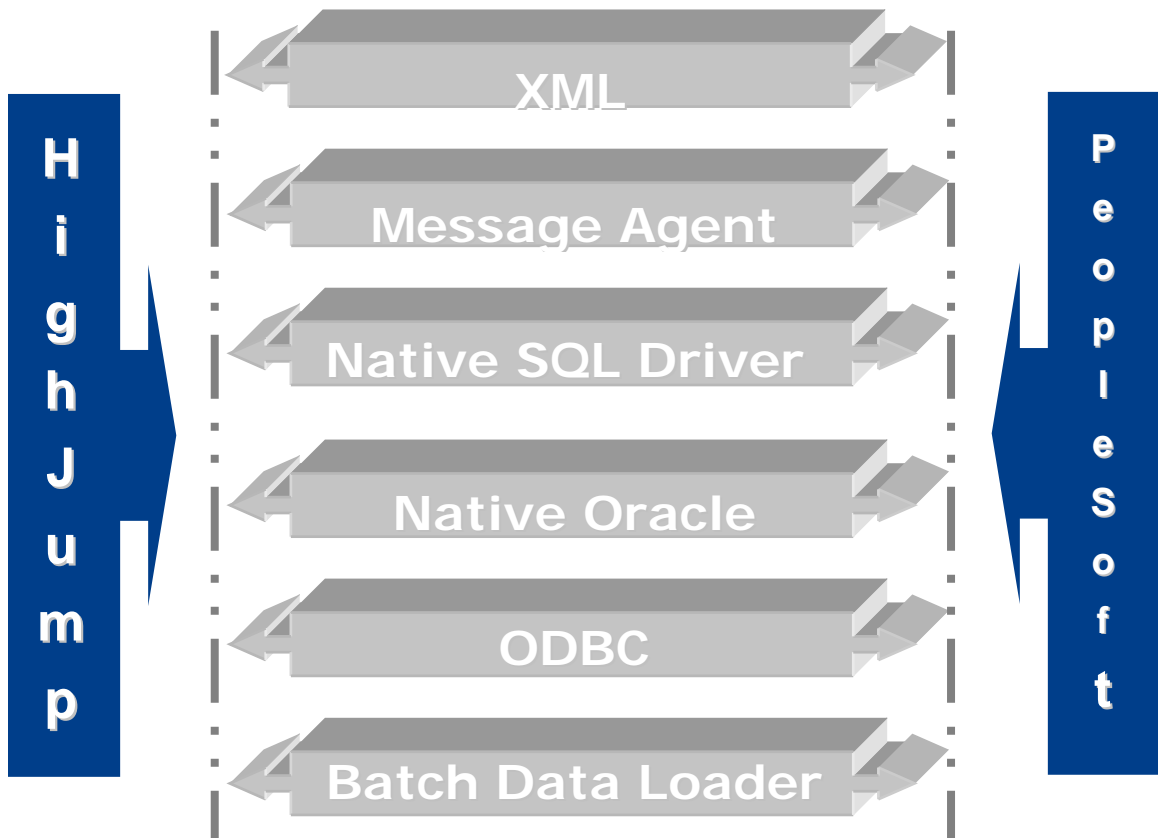
Key Benefits

- **Reduce errors**—Utilizing an automated system eliminates manual data entry work and the inaccuracies involved with trying to decipher hand-written notes
- **Reduce costs**—With the ability to track all deliveries/pick-ups, you can eliminate the unnecessary expense of sending duplicate shipments to cover deliveries customers claim did not occur
- **Improve worker productivity**—Reduce the time customer service representatives spend searching for delivery/pick-up information
- **Keep customers satisfied**—Complete, accurate delivery/pick-up information and fast response to status requests keep customers happy

Features	Benefits
Support for directed and ad-hoc deliveries/pick-ups	<ul style="list-style-type: none"> • Offers flexibility to meet your specific business requirements • Provides ability to track activities and record relevant information
Visibility of deliveries and pick-ups	<ul style="list-style-type: none"> • Leverages intuitive Web application to access delivery and pick-up information
Route, operator and customer performance metrics	<ul style="list-style-type: none"> • Displays on-time delivery statistics, exceptions and times for deliveries

PeopleSoft Interface

HighJump Advantage Platform for PeopleSoft features real-time, certified interfaces to your PeopleSoft system, and supports all versions beginning with 7.5 through 9.0. HighJump tests all transactions utilizing these interfaces into PeopleSoft prior to release of all new versions. In addition, in the event that PeopleSoft is not available or RF connectivity is temporarily lost, the Advantage Platform can be architected to store the transactions and upload them in the order they were received (FIFO) once your PeopleSoft or RF network system becomes available.



System Architecture

